

HEIGHTS		
TYPE	H	A
AL933	900	1000
	1000*	1000
	1200	1000
AL934	1500*	1535
	1700	1535
	1800	1535
	1900	1535

* STANDARD HEIGHT

Cables to be provided by the client:

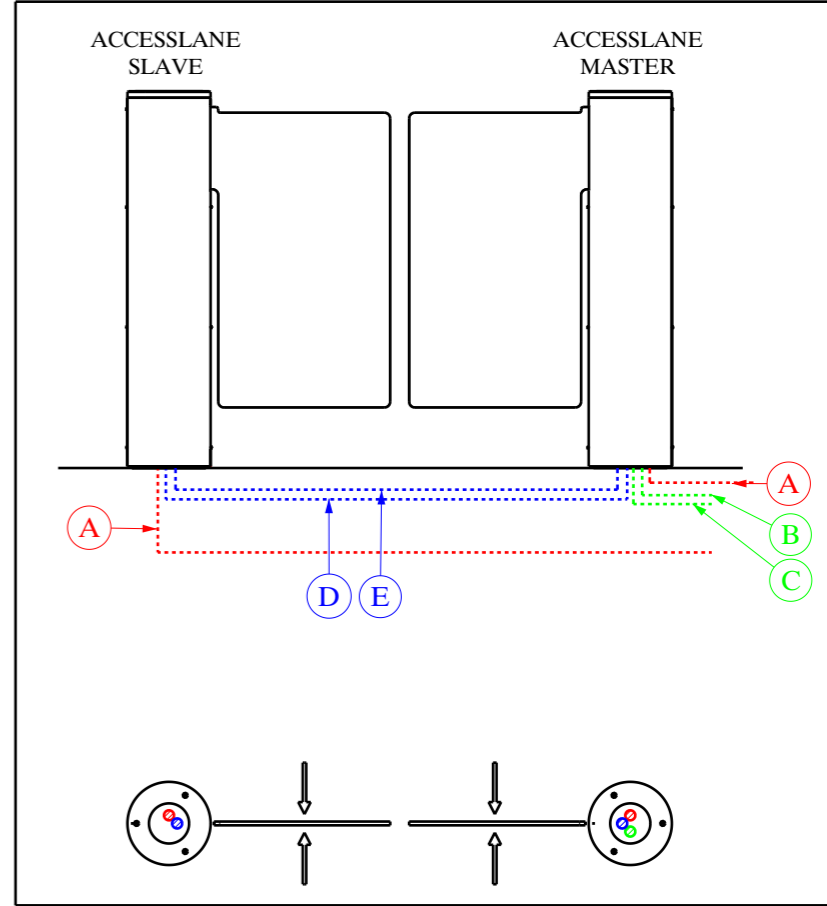
- (A) Main power (120/230VAC) cable: 3G2.5mm²
- (B) If there is a control panel provide cable in 8 pairs 0.6mm² type TPGF
- (C) IP cable (Ethernet) STP CAT.5

Cables provided by Automatic Systems:

- (D) CAN cable (between housings) LIYCY (TP) 2x2x0.25mm²(max.10m) for master/slave configuration
 - (E) Earth wire 2.5² for master/slave configuration
- } Together inside the same PVC tube

Note:

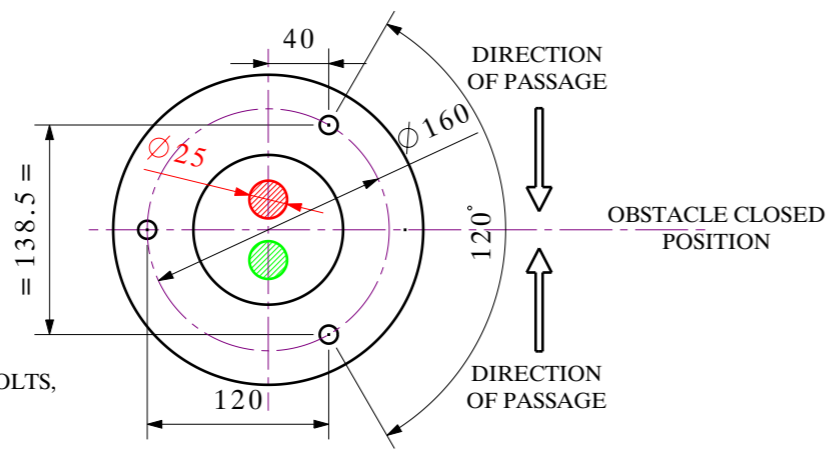
In any case, plan for 1m tail cable end
 Plan for a wiring harness between master/slave
 Plan for 3 PVC tubes Ø25



scale : 1:20



FLOOR FIXING DETAIL SCALE 1/5



PROVIDED FIXINGS :
 DRILL Ø15 DEPTH 100mm
 FIXING TO THE FLOOR WITH EXPANDING BOLTS,
 TYPE LIEBIG B15/70
 (DEPENDING ON THE TYPE OF FLOORING)

Les dimensions sont données en mm.
 Dimensions are given in mm.
 Ne pas mesurer sur le plan.
 Not to measure on the plan.

DESIGNATION :	ACCESSLANE 933 / 934			
Ce plan est la propriété d'Automatic Systems. Il ne peut être diffusé, reproduit ou utilisé sans autorisation écrite de Automatic Systems. This drawing and all the information contained is the property of Automatic Systems. Duplication of this document or design information is strictly prohibited without written permission of Automatic Systems.				
 Avenue Mercator. 5 - B-1300 Wavre www.automatic-systems.com	DESSINE : DRAWN :	DATE :	N° DOSSIER :	
	CF	06/12/2016	STD	
	VERIFIE : CHECK BY :	ECHELLE : SCALE:	PLAN N° :	
	SD	1/10	CH9117-gb	B